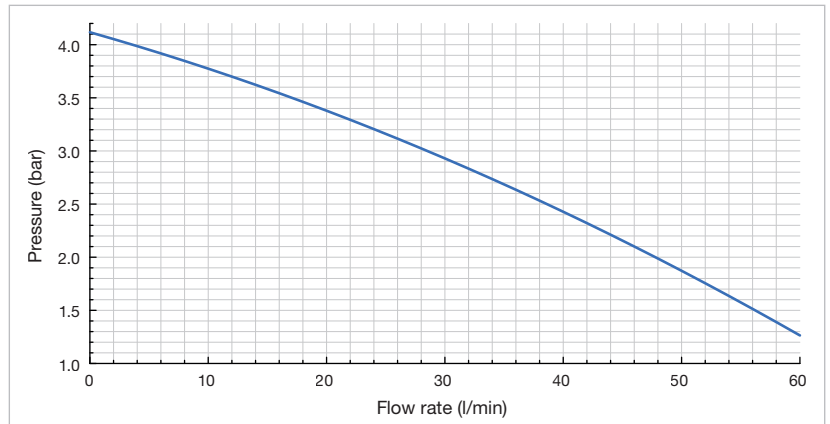


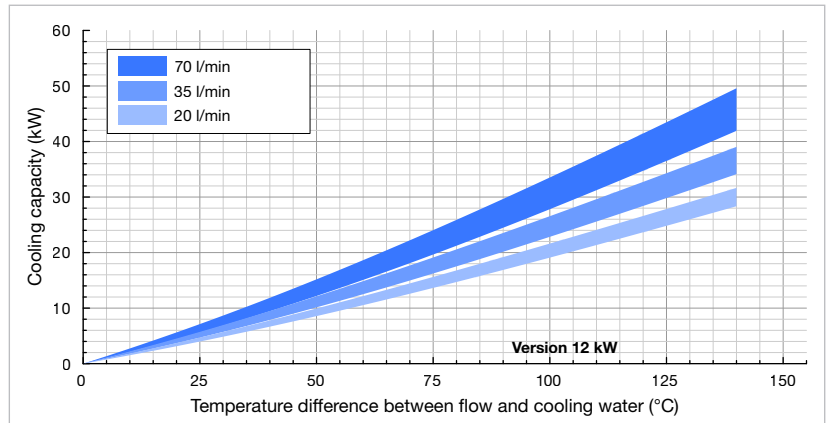
CLASSIC Water TT-142

- Pressure relief
- Flow meter

Pump characteristic curve

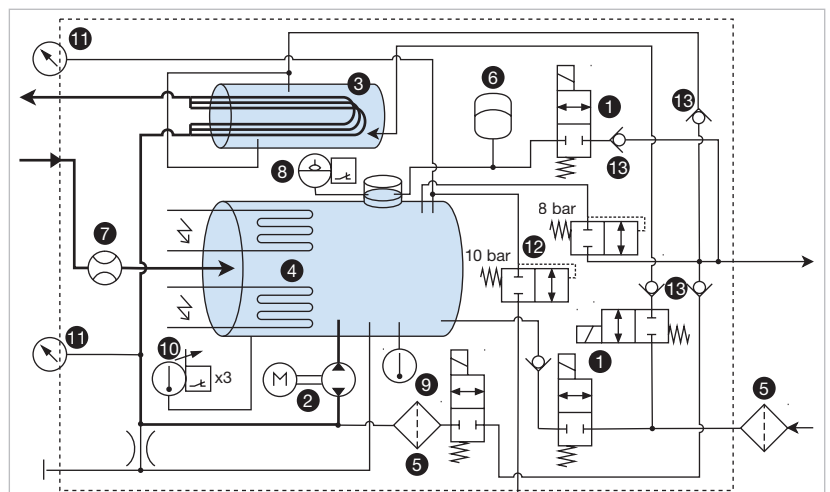


Cooling capacity

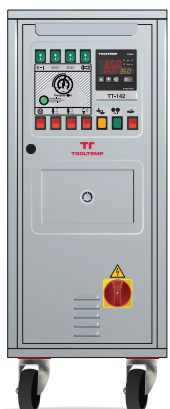


Power specifications 12 kW at min. 12 l/min @ 2 bar; at max. 25 l/min @ 8 bar cooling water

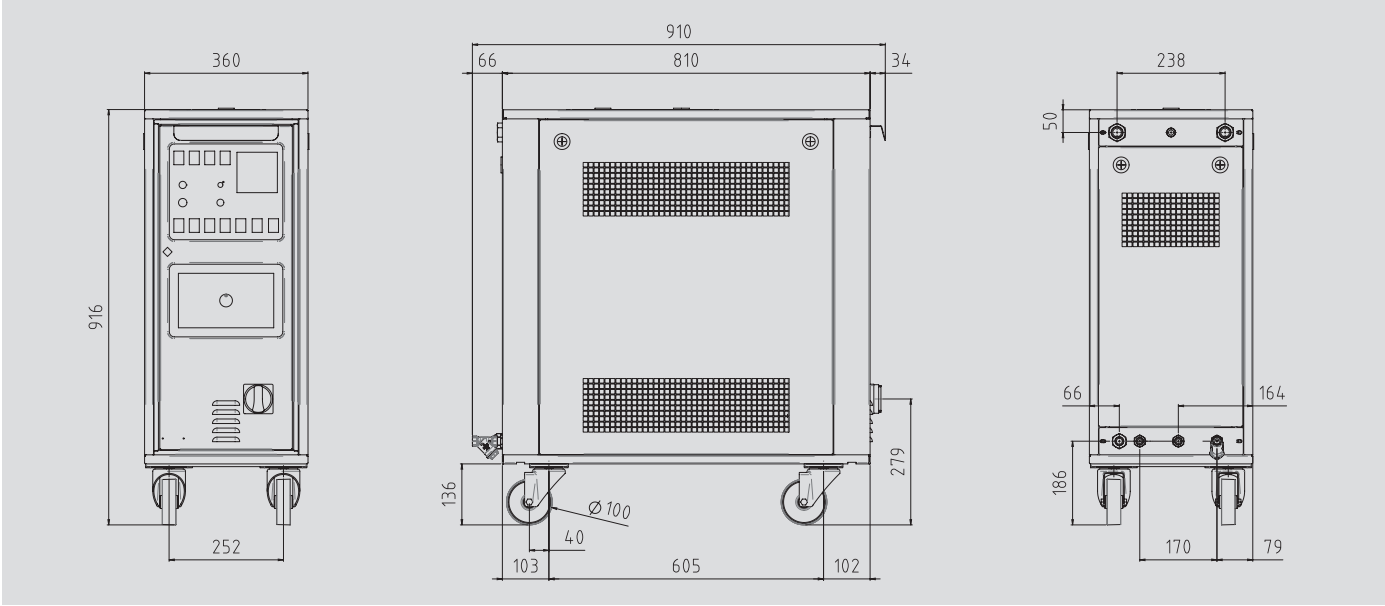
Fluidic diagram



1 2-2 way valve (normally closed), 2 circulation pump with reversible pumping direction, 3 tube bundle heat exchanger, 4 heating element, 5 filter, 6 expansion vessel, 7 flow sensor, 8 level sensor, 9 temperature sensor, 10 thermostat, 11 pressure gauge, 12 pressure relief valves, 13 non-return valve



Technical data



	Water
Maximum temperature	140 °C
Heat output	12 kW
Cooling capacity	See diagram
Pump	Type N
Pressure and flow rate	See diagram
Rated power of the motor	1.5 kW
Control system	MP-888
Temperature measurement	Temperature sensor FeKo type J
Pump pressure measurement	Pressure gauge
Flow measurement (heat transfer medium)	Bevel gear sensor with inductive pick-up
Connections	
Circulation medium	¾" BS internal thread
Cooling water, inlet	¾" BS female thread, with water filter
Cooling water, outlet	¾" BS female thread
Unladen weight	107 kg
Colour	Silver grey RAL 7001
Surroundings	
Temperature range	5-40 °C
Relative humidity	40-80 % RH (non-condensing, no ice formation)
Installation	Inside, ventilation openings must be at least 10 cm clear
Continuous sound pressure level	< 70 dB (A)
Power supply	380-480 V, 50/60 Hz or alternatively 200-240 V, 50/60 Hz
	Pump type N
Connected load	13.6 kW
Conductor cross-section of connection cable	
200-240 V	10 mm²
380-480 V	6 mm²
Protection class device	IP44
Labelling	CE